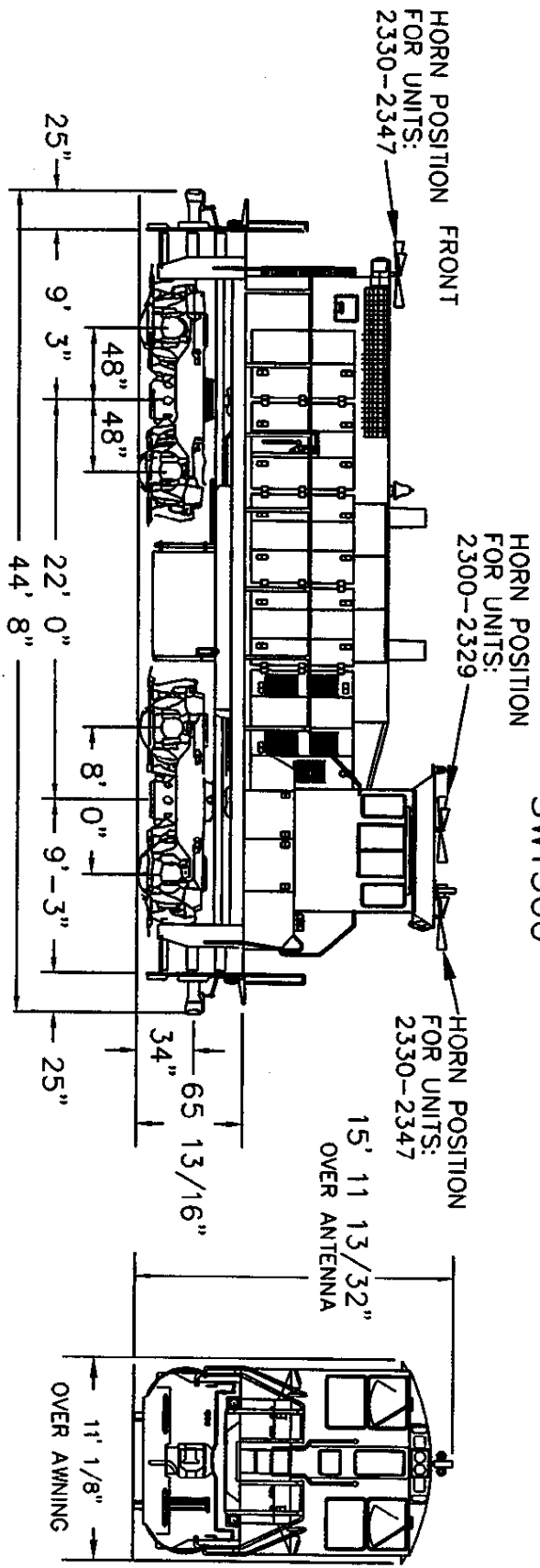


SW1500



GENERAL	PERFORMANCE FEATURES	CAPACITIES
Order No.	SEE NOTES	Horsepower
Year Built	SEE NOTES	Max. Cont. Tractive Effort
No. of Axles	4	Min. Continuous Speed
Control Arrangement	SINGLE	Maximum Speed
Weight: Full Supplies	260,000 lb	Traction Motor Rating
Half Var. Supplies	254,600 lb	Multiple Unit Control
Max. Curvature: Single Unit	57 deg	Dynamic Brake System
	MU	
	54 deg	
	w/50' Cor	
	29 deg	
BRAKE CYLINDER PRESSURE		
Automatic	J-64B (32 PSI) J-46B (30 PSI)	
Independent	J-64B & J-46B (32 PSI)	
<p>NORFOLK SOUTHERN CORPORATION LOCOMOTIVE DEPT. ATLANTA, GA</p>		
Builder	EMD	Owner
Model	SW1500	Rev.
		SEE NOTES
		4-06
	Unit Numbers:	2300-2346
<p>NOTES</p> <p>- UNITS 2330-2346 HAVE 2 - NATHAN P142 HORNS, ONE LOCATED ON THE CAB AND ONE LOCATED ON THE LONG HOOD.</p> <p>UNIT ORDER NO. OWNER YEAR B.L.T.</p> <p>2300-2328 7139 SOU 1968</p> <p>2330 4563 SRTA 1969</p> <p>2331 4563 INT 1969</p> <p>2332 4563 NOT 1969</p> <p>2336 4564 CNOTP 1969</p> <p>2338-2339 4574 CRN 1970</p> <p>2343-2346 4582 CC 1970</p>		